

CAFE EUROPA

TECHNICAL RIDER (version OCT 2017)

Please find enclosed the technical requirements for our **SHOW – CAFE EUROPA**.
Please talk to us in time in case you cannot fulfill some requirements or if you need further explanations.
We prefer to find a mutual agreement *before* our arrival, as the technical requirements become part of the contract.

The promoter is responsible for all local permits.

1 - Description of the show

CAFE EUROPA is an open-air show for big squares. There is "separation" between the stage and the place for the public.
The entrance and the movements of some machinery are from the side of the stage area.

Some of the actors will move / carry some objects. Some giant objects are slowly moved. Different stage areas on wheels are used and moved during the show.

All the structures and the machinery are moved mechanically from the live action of the performers.

The duration of the performance is ca 1 hour. The beginning has to be planned at **darkness** for the use of video projections.

2 - Requirements of the square / stage area

Best Size: 28 meters x 15 meters just as show-area

This playground is space for the actors / objects / structures.

In case of no building behind the stage area, we have to hang 8/10 long white flags on a truss system.
(PLEASE CHECK POINT N° 6)

We need a closed area, no passage of car or people.

Height above the stage: 10/12 meters must be free for scenic structures as well as enabling the use of pyrotechnics effects.

Organizer is responsible for all structures, walls, barriers to prepare the space and to explain us in time how it will be done.

Surface: The surface must be hard and plain – suitable moving big objects on wheels. Especially with rain we have to use hard surface without gaps. Best : please send us photos about your venue.

Additional space:

We need enough space for the audience (ca 2.000-2.500). The best position is 130°/140° around the front stage (or just frontal). There are different levels of the show action: never ground level is used as stage for the action.

>> Chairs or benches for the audience could be useful and suitable: **please talk with us about this point.**

>> **The whole stage area is available from the beginning of the construction until we leave after loading. In this period cannot take place any other activity (like markets, other spectacles).** Any other usage of the square must be communicated and agreed upon in advance. We really need this period and this space.
It is not easily possible to gather all scenic elements on a small spot.

3 - Parking places

We need secure / guided parking places for 1 big truck (LORRY) (with a length of ca 12 meters) from the moment of arrival.

The parking places are free of charge for the artists. Any cost for parking are paid by the promoter.

In case the site of the show is more than 15 minutes of walking distance from the hotel, we need shuttle bus between the places arranged by the festival.

4 – Electricity (for light / sound / video)

35 Kw total electricity required

We need 2 separate lines (in case of different solution, please contact us)

First line 20 Kw max for dimming line (CEE power box of 63A with minimum 4 plug 32A 380-400v for dimmer)

Second line 15 Kw max for direct line (CEE power box of 32A with minimum 6 plug 16A 230v for the stage area + audio and video)

Available for the artist from the beginning of construction.

The promoter is responsible for the cable connection between the point of power and the plug at the light wind-up / PA speakers / mixer-desk.

If there is used a generator to produce the electricity, this machine shall be noiseless (well covered) or it shall be installed in a distance of ca 50 meters to the playground (+ cables needed).

If local security asks to cover cables around the playground, this is the responsibility of the promoter.

For sure we need to cover the VIDEO CABLE from the mixer desk to the front/center of the stage area (normally 15 meters >> it depends from the venue): 15 meters (or more) : **hard cable cross (yellow jacket) is required** >> carpet is not strong enough for the video cable

We need **3 connections 220 Volt plug 3 poles** (1 center/frontal side / 2 side left and side right of the stage area for the use of SCENERY STUFF – no DIMMER line)

We use the CEE BLUE PLUG 2P+E 16A 220V.

We have some adapters with us: Schuko Plug adaptor / Italian AC Power Plug adaptor

Check: please let us know about the connections / adapters in time before our arrivals in case we have to arrange a solution.

5 - Light + Sound + Video

ONDADURTO TEATRO requires these equipments directly to the promoter.

Please if there is any doubt about the technical supply, contact us in advance.

>> **LIGHT PLAN at the last page**

Please switch-off public lighting DURING THE PERFORMANCE and DURING THE FOCUS OF THE LIGHT and VIDEO REHEARSAL from the nights before the show.>>

Light:

Lanterns:

- 4 DIMMER X 6 CH X 3 kw (24 dimmer channel)
- 1 MARTIN ATOMIC 3000 STROBE
- 8 FRESNEL 2 Kw (c/w barn door and color) ARRI (or similar)
- 14 FRESNEL 1.2 Kw (c/w barn door and color) ARRI (or similar)
- 10 PROFILE ETC 750 watt (or similar) >>50° angle

>> List of colors: **NORMALLY** we use LEE Filters

- White	>> no filters	- Orange	>> n°105
- Primary Red	>> n°106	- Medium Blue	>> n°132

CABLING VERY IMPORTANT>> we need long multichannel and long cable because of the long line way, check the light plan in order to know about the passage of the cables

- 15 meters (or more, it depends from the distance of the controller area from the playground) : **hard cable cross (yellow jacket) is required** >> carpet is not strong enough for the video cable

Controls and wincher stand

- 1 light console, model 1 universe 512 with cue and memory system Spark Compulite or Grand MA or similar

- 4 lift wincher stand system

>> n°2 of 3/3,50 meters of height

>> n°2 of 5/6 meters of height for the front light (for safety reason could be useful to close with barriers) (**PLEASE**

CHECK POINT N° 7)

>> **Sound:**

1 audio console, model 16 ch YAMAHA 01V 96i or similar

(IMPORTANT >> WE USE MICROPHONES, so we have to equalize the voices)

4 PA speakers with amplification + 4 SUB – 5.000 watt (or more >> it depends by the space)

02 monitors wedge

We use 1 LAVALIER + 1 HEADSET MICRO brought from our side: **IT MEANS, NOT REQUIRED FROM YOUR SIDE**

MODEL USED : SENNHEISER ewD1 series

We need just to connect it to the mixer. Receivers' position is at the playground >> **cable required from the playground to the controller area.**

>> **Video:**

the company brings its own beamers: we don't need nothing from your side.

The beamer will be put on the frontal part of the playground directly on the ground.

We don't need any support from you about that.

6 - EXTRA >> Background materials

In case of no building on background

We need additional technical materials to hang 8 /10 screens as back side video screens. It will be not a compact surface. We not to use a normal video screen.

>> **we will bring** with us 8/10 screen flags of 6,50 meters in high and 1,50 meters in wide each

The additional materials required are:

- 3 wincher lifts (arriving to 6mt of high - Mobiltech lift - Maximum lifting load capacity: around 270 kg)

- TRUSS SYSTEM 18 meters in long of, where we hang 8/10 flags by plastic tight strips

- 20 sand bags or weight discs of 20 kg each, or PLEASE check with us other solution.

- **it is really important to have 4 PLINTHS** to anchor the wincher lift when we go up with the flags for safety reasons: 2 on each side of the TRUSS SYSTEM

7 - Barriers (to be organized by the promoter) + close behind

To protect objects and machineries, the promoter shall provide

- 22 barriers for the 2 side of the playground (11 + 11)
- 6 barriers for the tower light in case of safety reasons

Normally we use the bar pedestrian barriers: they have a dimension approximately of 2,00 meters in long and 1,00/1,20 meters in height made in pvc or metal.

It is necessary during the show to have a safe stage area, without any passage of people at the side of the playground area.

>> **We need to close the space behind the playground** in order to have not people there or any possible entrance of not admitted people, because the playground will be in the middle of the venue for reduce the space for the audience
IT MEANS THAT WE NEED EXTRA BARRIERS JUST FOR THE BACK-GROUND AREA.

THE 22 BARRIERS REQUIRED ARE JUST FOR THE 2 SIDES OF THE PLAYGROUND

8 - Special effects

Pyrotechnics: in the middle of the show we use a "Pyro cascade" and during the show we use some smoke candle.

The effects are indentify from the Italian law as pyrotechnic effects of CAT IV and V, free sale and declassified, not subject to authorization, under the Article 47 of the TULPS (Consolidated Text of Laws on Public Security: RD 18 June 1931 No. 773), in accordance with Ministry Act by April 4, 197 Annex "A" to the Regulations for the Execution of this Act (RD 6 May 1940 n ° 635).

9 - Wardrobe

The organizer arranges a room big enough for 12 people. This room is equipped with chairs, electric plugs, toilet and water tap, guided or lockable.

We need a place where the whole team can sit (especially in difficult weather situations).

>> ***This space is important also as a storage place.***

It could be helpful to have a place with a floor because in a storage place: the normal ground could be a problem for costumes / objects. Let us know if you see it possible.

In case of needs, our truck could be used as a storage place if it will be parked near to the playground

In case we use our truck as storage place. anyway we need a "place" for 12 people to prepare them self before the show.

At backstage area, the promoter provides cold and warm drinks. *Many thanks*

10 - Local staff + their timetable

The promoter will provide all staff and technicians :

- 1 person who has the power to do decisions, available for the company from the moment of arrival until departure
- Technicians for light : montage, light check, show, de-montage
- Technician for sound : montage, sound check, show, de-montage
- Stage hands (unloading, support in building structures, loading)
- Night guides and security
- **Day of construction: 3 persons as help hands >> 3 hours in total**
- **Day of dismantle: 3 persons as help hands to loading >> 3 hours in total**

- **NO light / NO sound technician during the show are required "behind" the MIXER DESK.**
Show will be done by our technicians >> we need **just the persons responsible** for the lights / sound equipment
- 2 people: after the show (we use some streamers and confetti)

11 - Security / night guides + securities during meals

The promoter is responsible for security / night guides (1 night) (during meals, at the wardrobe before and during the performance, night guide)

- Lunch and dinner are often used for meetings. Therefore, the company will take the meals together and during these periods, it is necessary to have a security on the place.
- Night security: the night guides must stay at our site the hours required.

12 - To clean the area

The promoter will organize some helpers (2 enough) in order to remove from streamers and confetti and to clean the playground. The helpers will be provided with brooms, gloves and plastic bags.

To clean the area half hour is enough.

14 - General time table

OUR WORKING TIMETABLE is strictly connected with our arrival and our rehearsal day
PLEASE, remember that we have to define it before of our arrival.

In general :

- 1 day before show : arrival of company / managers. Technical meetings
- day of the show : technical set up (ca 8 hours). Sound check (ca 1 hour). Light check + Video check / SHOW
- day after show : de-construction + Loading.

All details and exact schedules >> to be determined

13 - Extra important things

1. It is preferable to performed the show in night time cause the use of VIDEO PROJECTIONS.
2. We require switching off the public lights near the stage area. >> *It's necessary.*
3. THE ORGANIZATION MUST PROVIDE ALL PERMITS NECESSARY FOR MAKING THE SHOW.
4. WE NEED AUTHORIZATION FOR 1 BIG TRUCK (LORRY) TO HAVE ACCESS TO THE STAGE AREA.
It means that the structures and the machinery **are not carried by hand.**
In case is not possible to arrive/park the TRUCK on/near the playground, please inform us in time.

14 - Merchandising

The artists bring a small flightcase where they sell merchandising articles (t-shirts, flyers, posters).
If there is a permit necessary to do so, the promoter organizes this permit.

15 - Accommodation

We arrive the **night before day of the show** and we leave the **day after the performance** = 2 nights for 1 show.
With 12 people, we ask for 2 single rooms, 3 double rooms and 2 twin rooms.

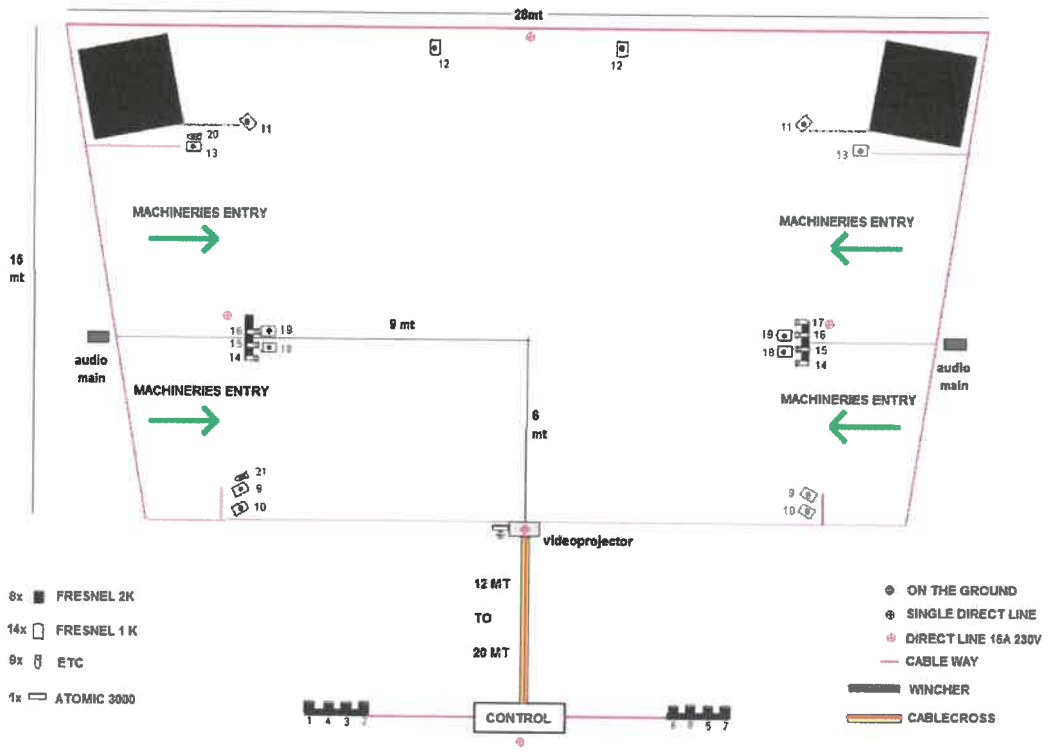
16 - Catering

Day of arrival dinner
Day of set-up + performance: breakfast / lunch / sandwiches in the noon / dinner after the performance
Day after the performance: breakfast / lunch
Special diets: 6 vegetarians / 3 vegans / 3/4 omnivores
Allergies NUTS and EGGPLANTS

17 - Contact Phone Numbers

- Overall coordination Lorenzo Pasquali
(*castellano, english speaking*)
- Logistics Giulia Vanni
(*english speaking*)
- Tech director Roberto Mazzaro
(*castellano, english, german speaking*)
- International manager Ute Classen
(*castellano, english speaking*)

18 - LIGTH PLAN
(version OCT 2017)



- 8x ■ FRESNEL 2K
- 14x □ FRESNEL 1 K
- 9x ▽ ETC
- 1x ▭ ATOMIC 3000

- ON THE GROUND
- ⊙ SINGLE DIRECT LINE
- ⊕ DIRECT LINE 16A 230V
- CABLE WAY
- WINCHER
- ▬ CABLECROSS

